

# **DYNAPAC** **SOIL COMPACTOR**

Dynapac CA305 / CA305D



**Dynapac proudly presents its latest top-quality soil compactor, the Dynapac CA305.**

This soil compactor is designed with all stakeholders in mind. Whether you are the machine's owner, contractor, operator or belong to the maintenance team, you will be most impressed with the Dynapac CA305.

# A NEW PERSPECTIVE ON COMPACTION GROUNDS

## The Right Choice

In a competitive market, stakeholders are always seeking to reduce the costs of their operations through a conscious choice of quality and efficient equipment. That is why it is necessary to choose the right soil compactor for the job. When it comes to efficiency, the new Dynapac CA305 is second to none.

## Continuous Innovation

Dynapac, renowned for its world-class performance, continues its innovative development in the Dynapac CA305's patented eccentric weights. These newly-patented optimized eccentric elements provide the very same Dynapac quality compaction but at a lower energy consumption.



### OPTIMIZED PARAMETERS

Provide superior compaction performance.

### LOW NOISE AND LOW FUEL CONSUMPTION

Sustainability and working environment in focus.

### MISSION CONTROL

Puts you in full control of the entire compaction process.

### EASY MAINTENANCE

Designed to simplify service.



# Performance at its best

The CA305 delivers all your compaction needs as it has all the features that help you execute even the toughest compaction applications. The CA305 gives you the quality, reliability and safety to tackle any compaction activity.



## High Compaction Parameters

World-class performance factors are found in the CA305's great compaction parameters. The CA305 has a high static linear load of 31 kg/cm, a high amplitude of 1.9 mm as well as an optimized frequency of 33 Hz. All of these impressive parameters are implemented to maximize compaction results thereby increasing owner efficiency.



## Optimised Eccentrics

Dynapac CA305 is known for very high performance & this is backed by our patented eccentric mechanism where less weight counteracts the movement at startup thereby reducing energy consumption at start-up by 50%. This is a real innovation & Dynapac are the first in the soil business to do this.



## Smart Mobility

Soil rollers are frequently transported from one job site to another and it is important for customers and contractors that this process is as efficient and convenient as possible. Dynapac understands that time is of the essence and has designed a canopy that is fully foldable, ensuring for a time-saving transportation of the soil roller.



## Great Serviceability

Thanks to the smartly designed hood that has an incredible opening angle of 65°, serviceability has never been easier. All critical service points for filling fluids, changing filters etc., are easily accessible.



## Operator Efficiency

Dynapac products always provide ergonomic, high-end operator environments. The Dynapac CA305 soil roller continues to impress. With the new platform design, the operator experiences a much-appreciated smooth driving environment. Further key elements for the operator are an easy to understand digital display console with a LED cool white backlight for night vision. Other convenient features such as mobile phone charging and bottle holder also enhance the operator's ergonomic work environment.

# PEAK PERFORMANCE

## LIGHTS

Night or day?  
Choose working/  
driving lights according  
to your needs.

## EXCELLENT ACCESS TO ENGINE

The engine at the rear offers excellent access for all service and maintenance needs. The engine hood is easy to open for quick maintenance and the hydraulic pumps are in line with the engine and fully accessible for service.

## SAFETY

Sloping engine hood  
and 1x1 meter view  
front & rear.

## SAFETY / PERFORMANCE

Heavy duty rear axle  
with failsafe brakes.



**PERFORMANCE / DURABILITY**

Thick drum shell ensures high compaction performance.

**PERFORMANCE**

Easy accessible dual scrappers

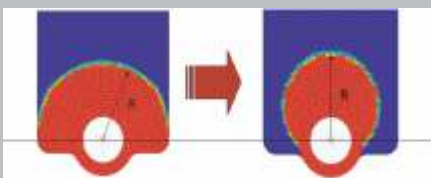
**STRUCTURE**

Heavy duty drum and tractor frame to withstand toughest compaction applications



**Dynapac patented / Design registered**

**Efficient Eccentrics**



X Compactor

CA 305

**Foldable Canopy**



For Ease of Transportation

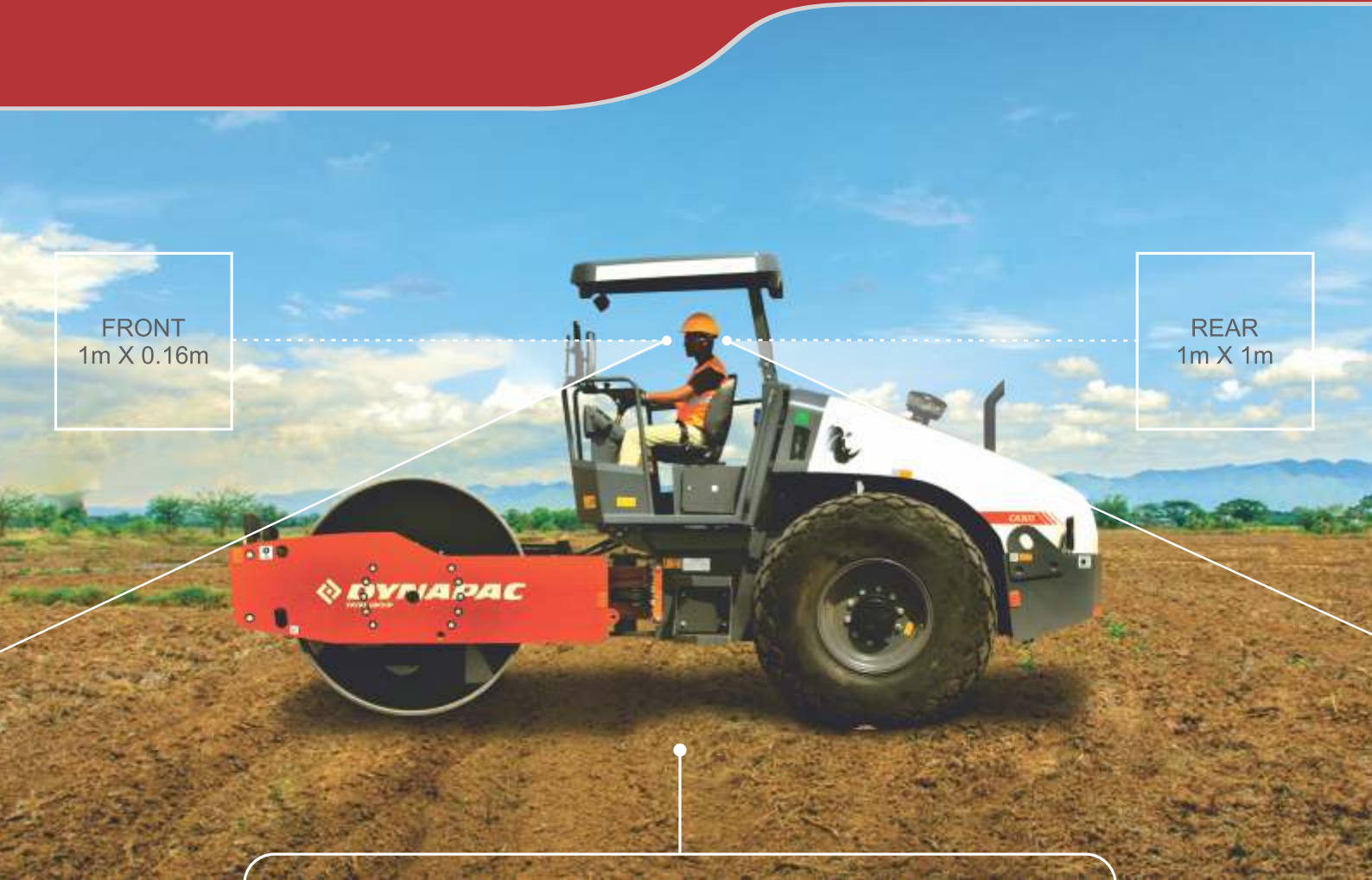
**Operator platform mounting**



X Compactor

CA 305





## Excellent Visibility

### MACHINE OPTION LIST



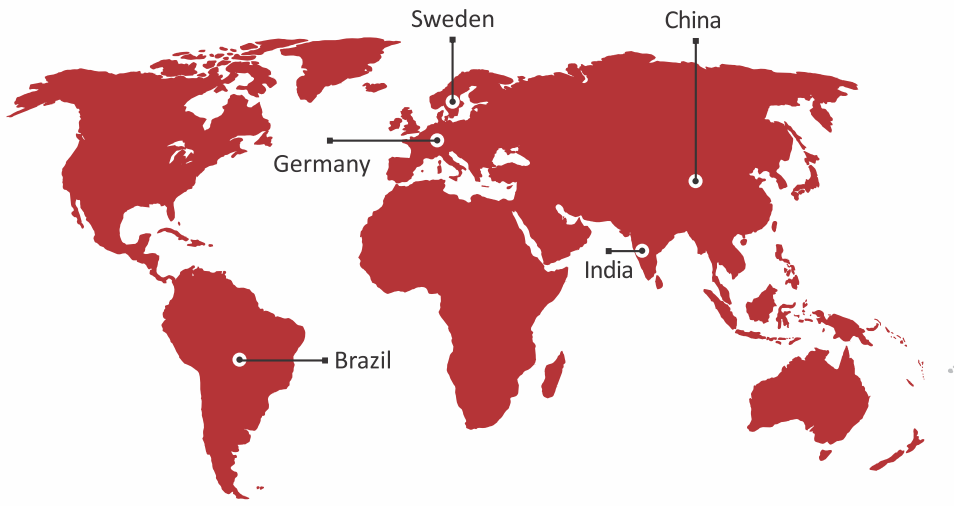
**DYN@LINK**

**Dyn@Link**

- Working Hours
- Maintenance Schedules
- Geofence

## TECHNICAL DATA **CA305 / CA305D**

	<b>CA305</b>	<b>CA305D</b>
Operating weight(kg)	11200	11400
Front Module Weight(kg)	6600	6800
Static Linear Load	31	32
Frequency	33	33
Amplitude stage 1	1.8	1.8
Amplitude stage 2	0.9	0.9
Centrifugal force (KN)	250/130	250/130
Gradeability (Vibration on) (%)	34	40
Steering angle (Degrees)	±38	±38
Oscillation angle(Degrees)	±9	±9
Drum width (mm)	2130	2130
Drum Diameter (mm)	1500	1500
Drum shell thickness	25	25
Engine make	KOEL	KOEL
Rated Power	105HP@ 2200rpm	105HP@ 2200rpm
Fuel tank (lit)	280	280
Machine speed (km/hr) Dual Speed	0-11	0-11
Engine cooling type	Water	Water
Overall length (mm)	5600	5600
Overall width (mm)	2260	2260
Wheel base (mm)	2990	2990
Overall height / Height with Canopy(mm)	2400 Folded Canopy 2977 Overall	2400 Folded Canopy 2977 Overall
Seat adjustment	F/w and Rev direction	F/w and Rev direction
Emission norms	BS-III	BS-III
Hydraulic tank cap (L)	55	55



## Manufacturing Facilities of Dynapac

## Dealer Sales and Service Network



### Dynapac Road Construction Equipment (India) Pvt. Ltd.

314, Nyati Unitree, West - A, 3rd Floor, Samrat Ashok Road, Blue Hill society, Yerawada, Pune-411012, India.

**Email.:**  
[customercare@dynapac.com](mailto:customercare@dynapac.com)  
**Customer Care No.:** +91 7030626222

*Your Partner on the Road Ahead*